



## Servo Driven Cup Filler

### Model NCF

For Granulars and Other Free-Flowing Dry Products

*Nalbach Engineering's Cup Fillers optimize filling efficiency and minimize maintenance and service*

The latest and most advanced design of cup fillers combines the reliability of the conventional cup filler with the advantages of a computer controlled servo motor drive system and user friendly touch screen. The computer controlled brushless direct drive servo motor system provides optimum speed and accuracy while reducing maintenance downtime. The graphical menus allow the operator to quickly and easily set up the machine.

The servo drive is engineered for superior accuracy and reliability by eliminating most problematic mechanical parts such as clutches, brakes, encoders, drive belts, pulleys and chains typically found in other cup fillers. The versatile NCF fills most dry products including granulars, seeds, popcorn, snack foods, beans, rice, candies and gravel. Fill accuracy up to  $\pm 0.5\%$  with a fill speed up to 120 per minute.

#### Benefits

- Readily adaptable to most form, fill and seal machines
- Fewer moving parts means reduced maintenance and downtime
- Touch screen with intuitive icon-based graphical user interface for more accuracy and control
- Stainless steel contact parts and rugged structural parts make for exceptional durability
- Adjustable acceleration/deceleration for optimal speed and product handling
- Cup volume fine adjustment to ensure fill accuracy
- Rugged construction, stainless steel contact parts and aluminum structural parts result in exceptional durability
- Empty hopper function for quick product changeover
- The product memory is capable of storing filling parameters for over 60 products with one button recall

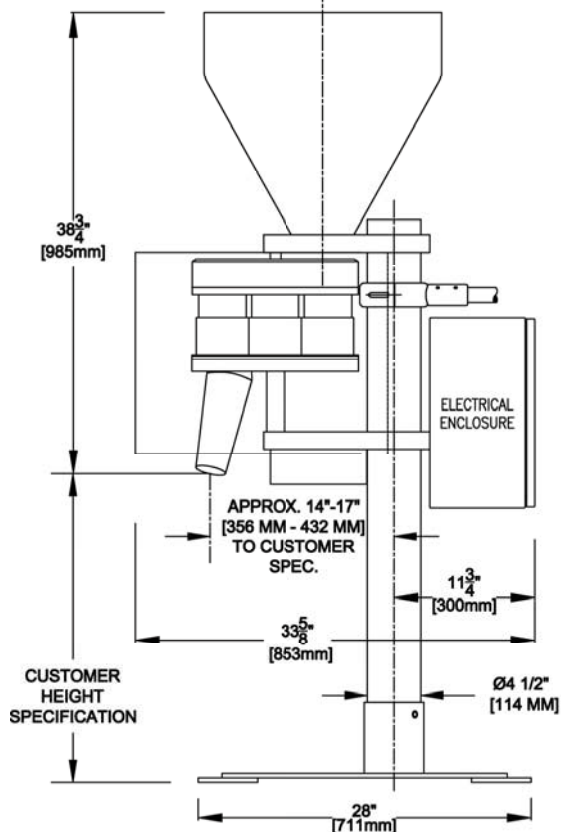
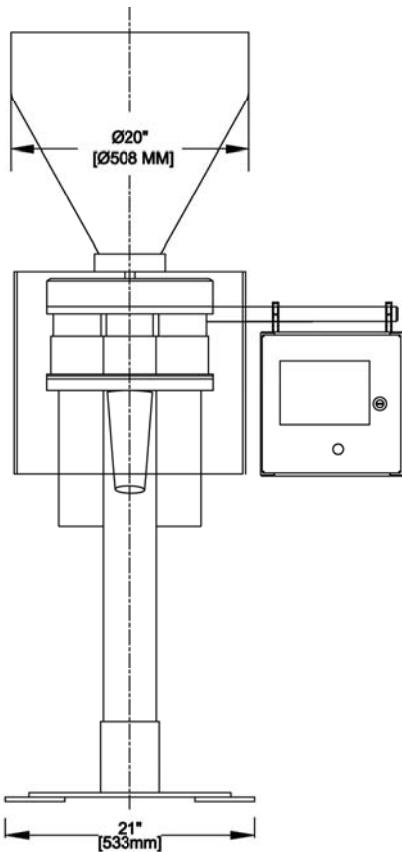
#### About Nalbach Engineering Company

Founded in 1945, our Company has earned its dominant reputation for quality and performance in the design and manufacture of a complete line of powder filling equipment and plastic bottle unscramblers. In addition, we offer aerosol fillers, turnkey packaging lines, and system integration services. A member of PMMI since 1958, Nalbach Engineering has developed equipment for a widely diverse client roster of Blue Chip companies and has installed systems in 45 countries around the globe.

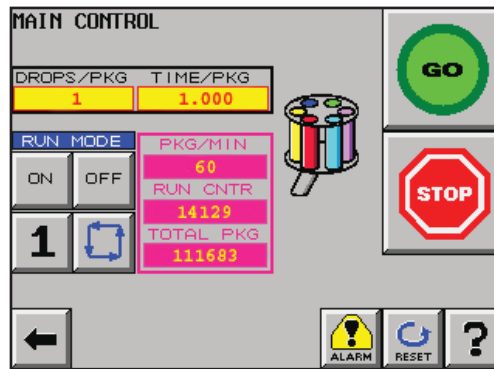




## Dimensions



Specifications subject to change without notice.



Touch screen user interface

The NCF sets a new standard in filling technology with a computer controlled digital servo motor drive and operator touch screen interface. The computer controlled brushless direct drive servo motor system provides superior fill accuracy and reliability. The user friendly graphic menu allows the operator to easily access product memory for fast set-up and accurate control of filling operations.

### Software Features:

- Adjustable machine parameters
- Adjustable cup drive speed
- Empty hopper
- Cup jog
- Recycle timers
- Adjustable acceleration and deceleration

### Standard Models

- **NCF1001 (Model 4 Cup):**  
Servo motor indexing  
Maximum diameter cup 4.5"  
Maximum cup height 20"
- **NCF1002 (Model 6 Cup):**  
Servo motor indexing  
Maximum diameter cup 4.5"  
Maximum cup height 16"
- **NCF1003 (Model Large 4 Cup):**  
Servo motor indexing  
Maximum diameter Cup 6.5"  
Maximum cup height 30"

## Specifications

### Electric and Controls

#### Display:

User-friendly touch screen

#### Electrical:

System voltage and frequency configured to meet customer specifications

#### Electrical Controls:

PLC - digital solid state

#### Enclosure:

NEMA 12 or optional NEMA 4

#### Cup Drive:

Brushless servo motor

Rated for 2 HP (1.47 KW)

#### Construction:

Stainless steel contact parts

### Speed and Accuracy

#### Filling Speed:

Up to 120 fills per minute

#### Filling Accuracy:

Up to  $\pm 0.5\%$  (.005)

### Options and Accessories

#### Container Handling:

Manual, conveyor and rotary indexing

#### Vibration:

Air and motor driven mechanical product settling vibrators are available

#### Product Infeed:

Vibratory conveyors, belt conveyors and screw conveyors

#### Level Control:

For product infeed system

#### Footswitch:

For initiating the fill cycle

#### PLC:

Commercial PLC controllers are available