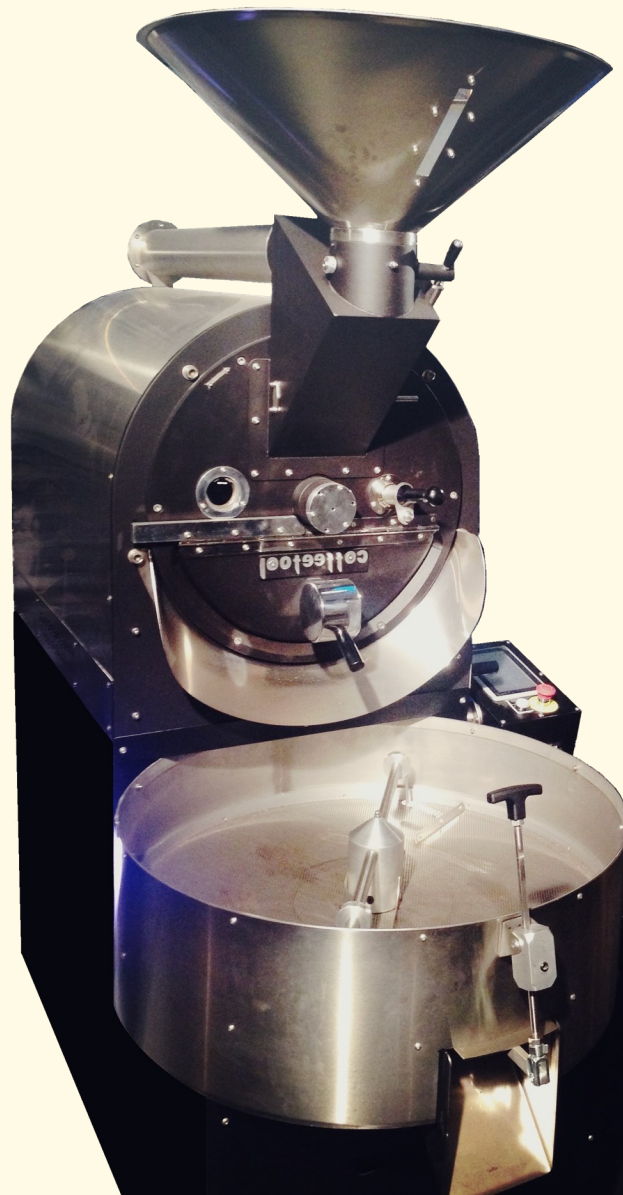


# *Coffeetool*

## *R-15*



**COFFEETOOL**

**M. & S. SAKANTARIS SOCIETY**

*Hand crafted machines since 1952*



**Certified  
products**



# R-15



**R-15** is a coffee roaster designed to roast quantities of coffee 12-18kg. The big raw coffee entry, along with the oversized drum exit door help the user roast many profiles fast and easily, making R-15 an excellent machine for a small production unit. The user-friendly control as well as the low noise level allow long-hour roasting with perfect results.

- ✓ Adjustable drum speed 0-100%
- ✓ Adjustable air supply 0-100%
- ✓ Adjustable SERVO burner volume 0-100%
- ✓ Separate fans for roasting & cooling
- ✓ Continuous duty
- ✓ Touch screen control & data display

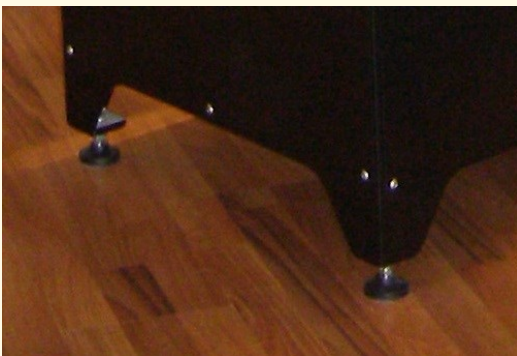
**Extra equipment:**  
afterburner,  
destoner,  
full automation,  
elevation

**Coffeetool R-15**

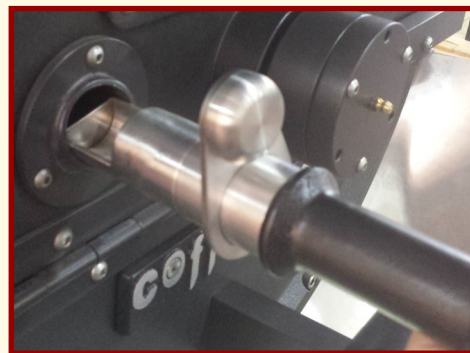
# TECHNICAL SPECIFICATIONS

<b>BATCH</b>	12 kg - 18 kg
<b>HOURLY OUTPUT</b>	72 kg
<b>COOLING TIME</b>	2 min
<b>ROASTING TIME</b>	9-18 min
<b>THERMAL POWER</b>	34 kW
<b>HEATING</b>	Propane / Natural gas
<b>VOLTAGE</b>	380V / 3phase / 50-60Hz
<b>ELECTRIC POWER</b>	2.24 kW

*\*The above values refer to raw coffee quantities & the max limit of the batch*



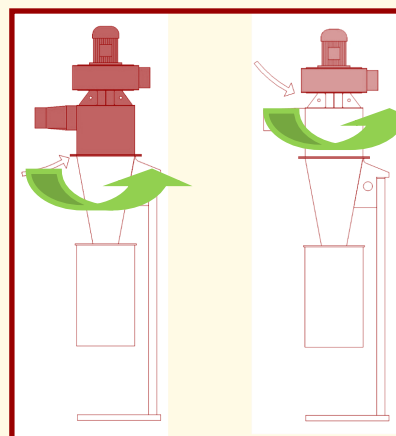
✓ Shockproof leveling mounts & special base design for forklift



✓ Big quantity sampler and sight glass for roasting development observation




✓ Headphones for crack sound

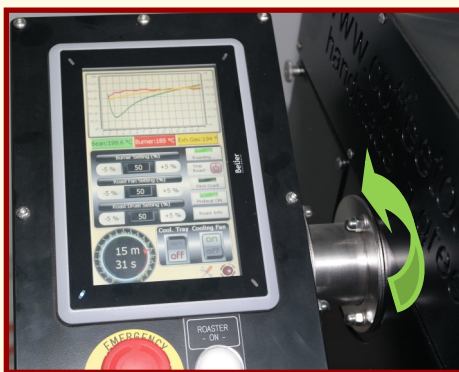


✓ Cyclone with adjustable parts for optimal in-room placement

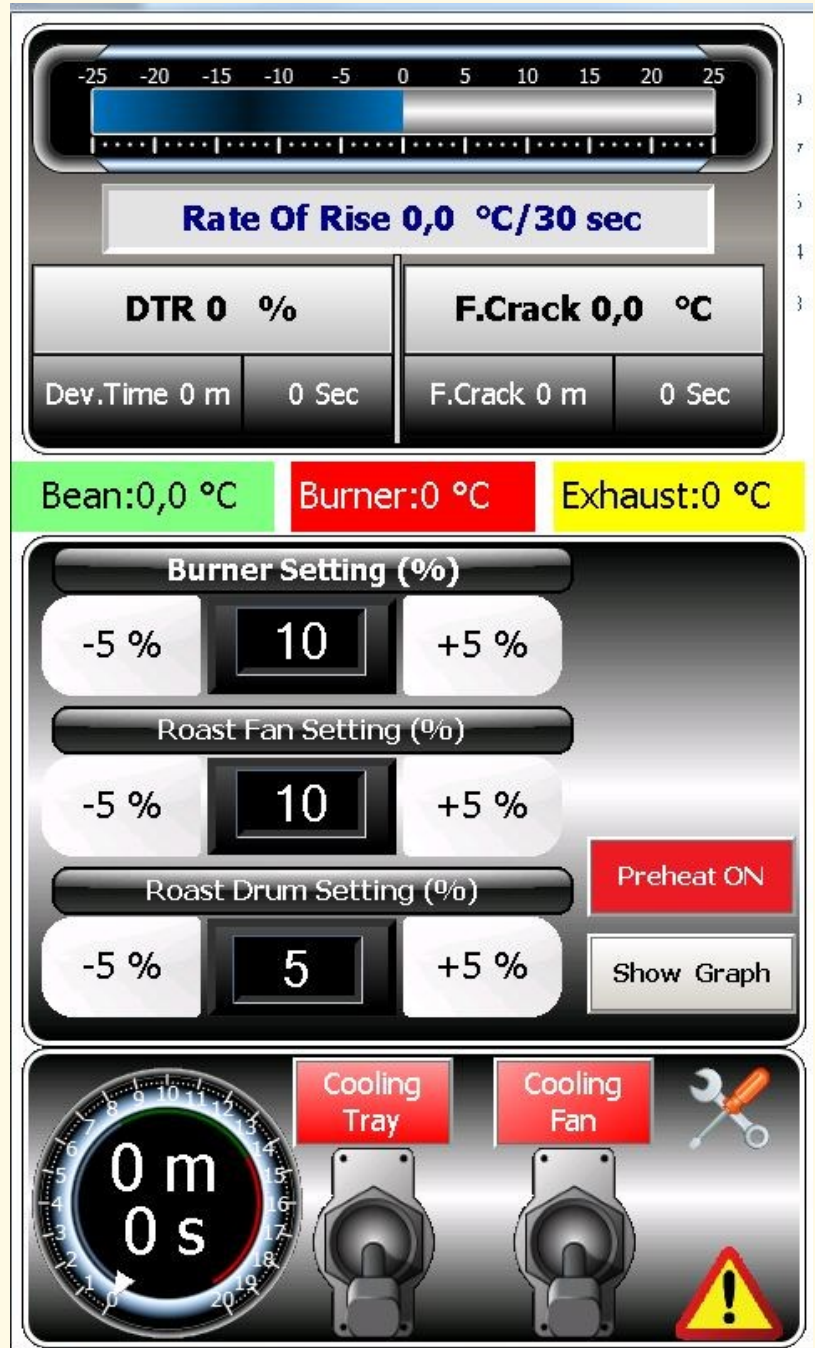
# Coffeetool R-15

***STANDARD (manual) version***  
***industrial TFT 7" touch screen***

- ✓ USB port for data logging (excel format)
- ✓ RoR continuous display
- ✓ First crack temperature & time logging
- ✓ Developing time logging
- ✓ Turning point logging
- ✓ Temperature-time graph
- ✓ Extra:  *easy connection*
- ✓ Connectivity with other logging softwares available



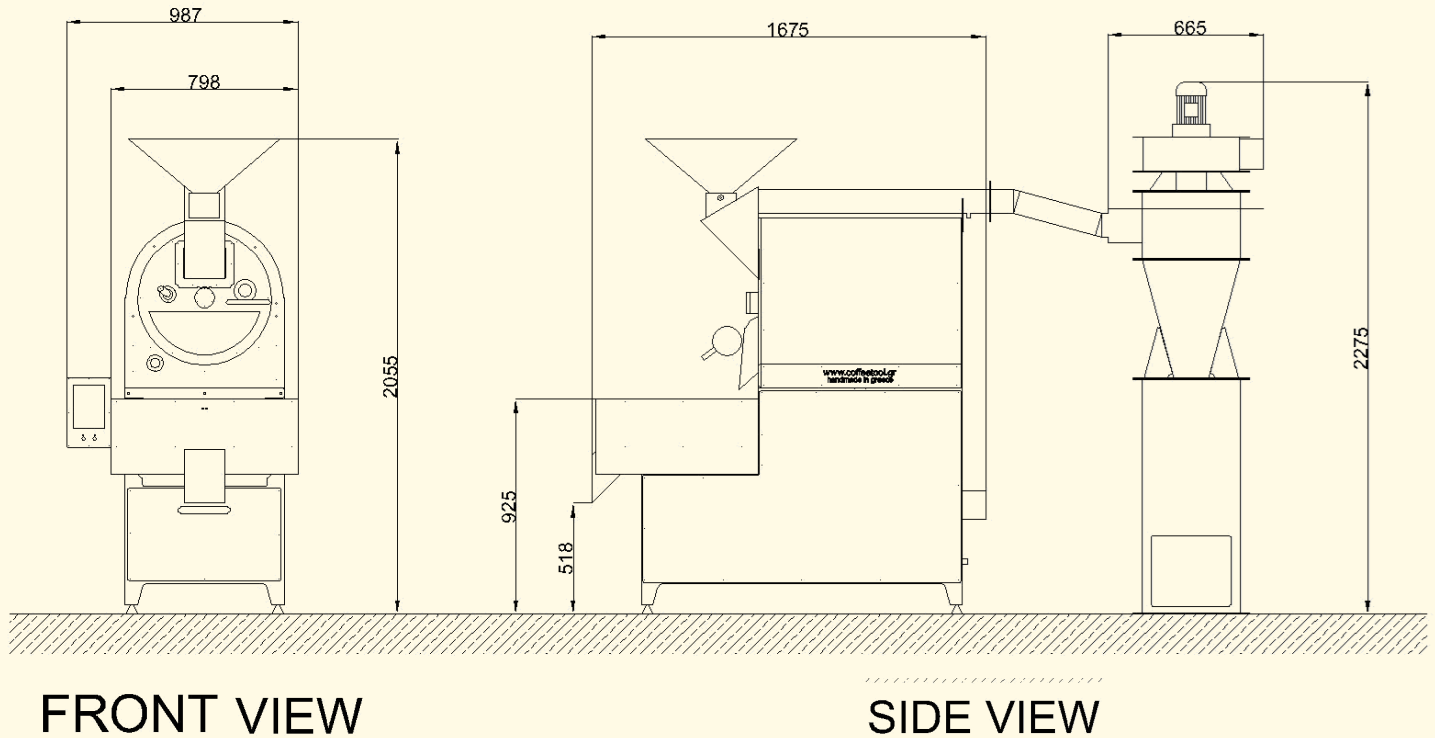
✓ *Inclination adjustable control panel*



*Main screen*



## **ROASTER DIMENSIONS**



## **SAFETY MEASURES**

- ✓ Water supply on cyclone, for protection in case of fire
- ✓ Cutting-edge technology equipment for the thermal protection of the motors with RE-SET button and restart
- ✓ Multiple safety measures on burner



***Coffeetool R-15***



- ✓ Roasters come with fully detailed user's manual
- ✓ After sales technical support provided
- ✓ 2 year/3.000 hours guarantee

**COFFEETOOL**  
**M. & S. SAKANTARIS SOCIETY**  
*Hand crafted machines since 1952*

INTERNATIONAL COFFEE EXPERT CORP.  
[WWW.EXPERTOSENCAFE.COM](http://WWW.EXPERTOSENCAFE.COM)